

# Analyses by GC-MS/O

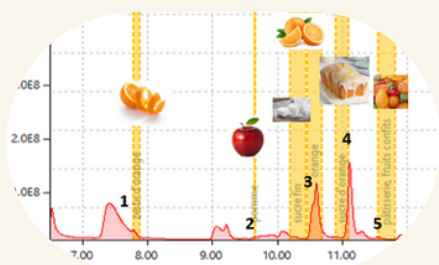


## EQUIPMENT

Gas chromatography coupled to mass spectrometry and olfactometry (GC-ToF-MS/O) is a relevant technique for the identification of volatile odorous compounds of a product

## PRINCIPLE

The volatile compounds present in a sample, after being extracted with the most suitable technique, are separated by gas chromatography and then detected and identified both by our mass spectrometer equipped with a time-of-flight analyzer and by one or several panelists through an olfactory detection port

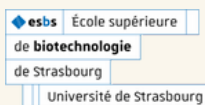


## APPLICATIONS

- Identification of olfactory defects
- Research of characteristic compounds of a product

*All our analyses can be coupled with olfactometry (GC-MS/O)*

## OUR SUPPORTS AND APPROVALS



*Expertise in the analysis of volatile compounds and antioxidants*

## CONTACT



+33 (0)9 72 25 90 40



[contact@twistaroma.fr](mailto:contact@twistaroma.fr)



[www.twistaroma.fr](http://www.twistaroma.fr)



TWISTAROMA  
300 Bd Sébastien Brant,  
67400 Illkirch-Graffenstaden